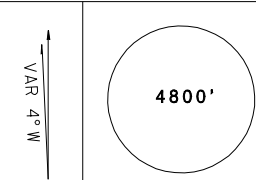
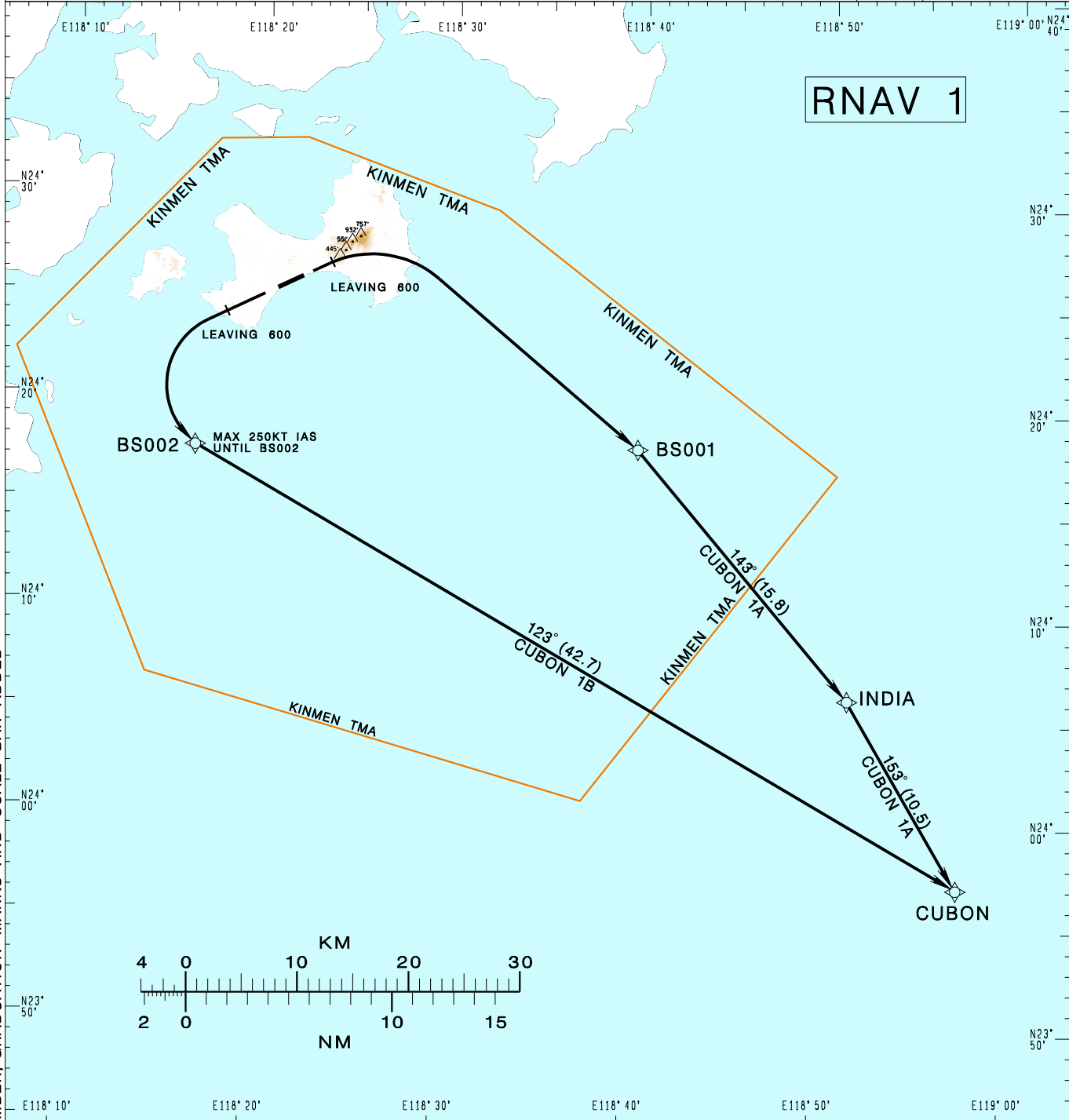


金門/尚義機場
KINMENSHANGYI AD

RCBS SID
CUBON 1A RNAV (RWY06)
CUBON 1B RNAV (RWY24)

| | | | | |
|--|---------------------------|--------------------|---|--------------------|
| KAOHSIUNG APP 124.6 133.1 | KINMEN TWR 118.0 126.2 | ATIS 127.2 |  | |
| Apt Elev: 56' | | Trans Level: FL130 | | Trans Alt: 11,000' |
| BEARINGS ARE MAGNETIC; DISTANCES ARE NAUTICAL MILES; ELEVATIONS, HEIGHTS IN FEET | | | | |



CHANGES: NEW PAGE NUMBER, GRADUATION MARKS AND SCALE BAR ADDED

CUBON ONE ALFA RNAV DEPARTURE
Depart RWY HDG until leaving 600ft, turn right direct to BS001, INDIA, CUBON.

CUBON ONE BRAVO RNAV DEPARTURE
Depart RWY HDG until leaving 600ft, turn left direct to BS002, CUBON.

NOTE
1.CUBON 1A minimum climb gradient: 6.8% (414ft/NM) until 2000ft.
2.CUBON 1B speed restriction: Max 250KT IAS until BS002.
3.Critical DME & DME gap not surveyed.
4.ATS surveillance required.